



# KC International Academy

414 Wallace Avenue, Kansas City, MO 64125  
816-242-4206

## **Kansas City International Academy – Kansas City, MO Request for Proposal “Network & Managed Network Services” February 9th, 2021**

### **Instructions to Vendors**

Kansas City International Academy (KCIA) is looking for a vendor to assist the Charter School in providing a network service for 670+ students along with 120+ staff.

We will be applying for federal ERATE funds to offset the costs of the project and currently are at a 85% discount level for Category II funding.

Any Vendor responding to the RFP, should list multiyear options with the contract proposal. KCIA also would like voluntary extensions offered in the contract proposal.

The due date for all RFP proposals will be Monday, March 15<sup>th</sup>, 2021, at 1 pm (central Time), and will then all be opened and analyzed starting at 1:15 pm.

The proposal will go to the school board for approval on Tuesday, March 23<sup>rd</sup>, 2021.

Please submit all questions and proposals to:

Bruce Rehmer  
[brehmer@kcia.us](mailto:brehmer@kcia.us)  
816-918-4010



# KC International Academy

414 Wallace Avenue, Kansas City, MO 64125  
816-242-4206

## Current Network status:

July 1<sup>st</sup> of 2016, K12itc was engaged to assist KCIA in providing these technology services listed below, all of which was covered by our monthly payments over a five-year contract period:

1. Provided network switches in the following location:
  - a. West Wing – Main hub
    - i. 1 – Cisco Meraki MS220-48lp
    - ii. 1 – Cisco Meraki MS225-24p
  - b. 3<sup>rd</sup> floor Main Wing
    - i. 1 – Cisco Meraki MS220-48lp
  - c. 2<sup>nd</sup> Floor Main Wing
    - i. 1 – Cisco Meraki MS220-48lp
    - ii. 1 – Cisco Meraki MS225-24p
  - d. Library Main Wing
    - i. 1 – Cisco Meraki MS220-48lp
2. Provided Meraki Access Points with the vast majority being MR42's, a couple of MR33's and one MR45 in the gym.
  - a. Main Wing (East)
    - i. Lower Level - 3
    - ii. 1<sup>st</sup> floor - 7
    - iii. 2<sup>nd</sup> floor - 10
    - iv. 3<sup>rd</sup> floor - 9
  - b. K-4 (West Wing)
    - i. 14
3. Content Filter – Securly
4. Firewall services
5. Server services (VM) provided for (onsite and/or offsite):
  - a. State testing
  - b. Printing
  - c. Imaging windows laptops
  - d. Other server space as needed
6. Microsoft Active Directory Services
7. Microsoft SCCM (Microsoft Endpoint Manager) services for Imaging windows computers
8. Domain Name registration assistance
9. Google (chromebook) Management support
10. Gmail, Google Drive and Account support
11. Jamf (ipad management) support
12. 8 hour onsite technician to assist with any hardware, software and media requests



# KC International Academy

414 Wallace Avenue, Kansas City, MO 64125  
816-242-4206

## Request:

KCIA is looking for a provider to provide the similar type of services and equipment the company K12itc has been providing.

- Duplicate the same number of switch ports in each wiring closet except for replacing the two 24 port switches with 48 port switches. This brings the total to 6 48-port switches.
- Vendor needs to provide 43 cloud based controlled Access Points at each location there is currently an access point.
- Vendor needs to provide a Firewall: Content Filter; Server space; Microsoft Active Directory services; SCCM support; Domain Name assistance; Google Chrome Management assistance; Google Support with Gmail, Drive and Account maintenance.
- Vendor needs to provide up to 8 hours of technical assistance onsite for end user support. This may include picking devices up to repair and return.
- Contractor needs to allow Technology Director access to all systems provided to be able to provide quick base level support.
- The contract should not just include setup and configuration but continual managed support during length of contract.
- Vendor selected needs to be well versed with the Federal ERATE system to assist KCIA in capturing federal funds allocated for KCIA.
  - Vendor must provide SPIN #.
  - KCIA prefers a vendor utilize the SPI method vs. the BEAR method of capturing ERATE reimbursements.
  - ERATE Billed Entity # is: 17012744
- Services need to be installed and configured as close to July 1st, 2021 as possible to eliminate down times in network connectivity for the building.
- KCIA received a grant from Aruba Network which provided 6 outside access points (AP-365) that were installed in the Fall of 2020. The new network configuration should provide support and connectivity for the outside Aruba network. We are not looking to replace these with this new contract.
- Vendor needs to provide references for customers who have received similar services requested in this RFP.

All questions presented from Vendors that will aide others in their RFP response will be posted at:

[https://docs.google.com/document/d/1QReL0PfoWKO5KQbCL06HLE7s1YMBsUR3\\_PujoyQ1sEg/edit?usp=sharing](https://docs.google.com/document/d/1QReL0PfoWKO5KQbCL06HLE7s1YMBsUR3_PujoyQ1sEg/edit?usp=sharing):

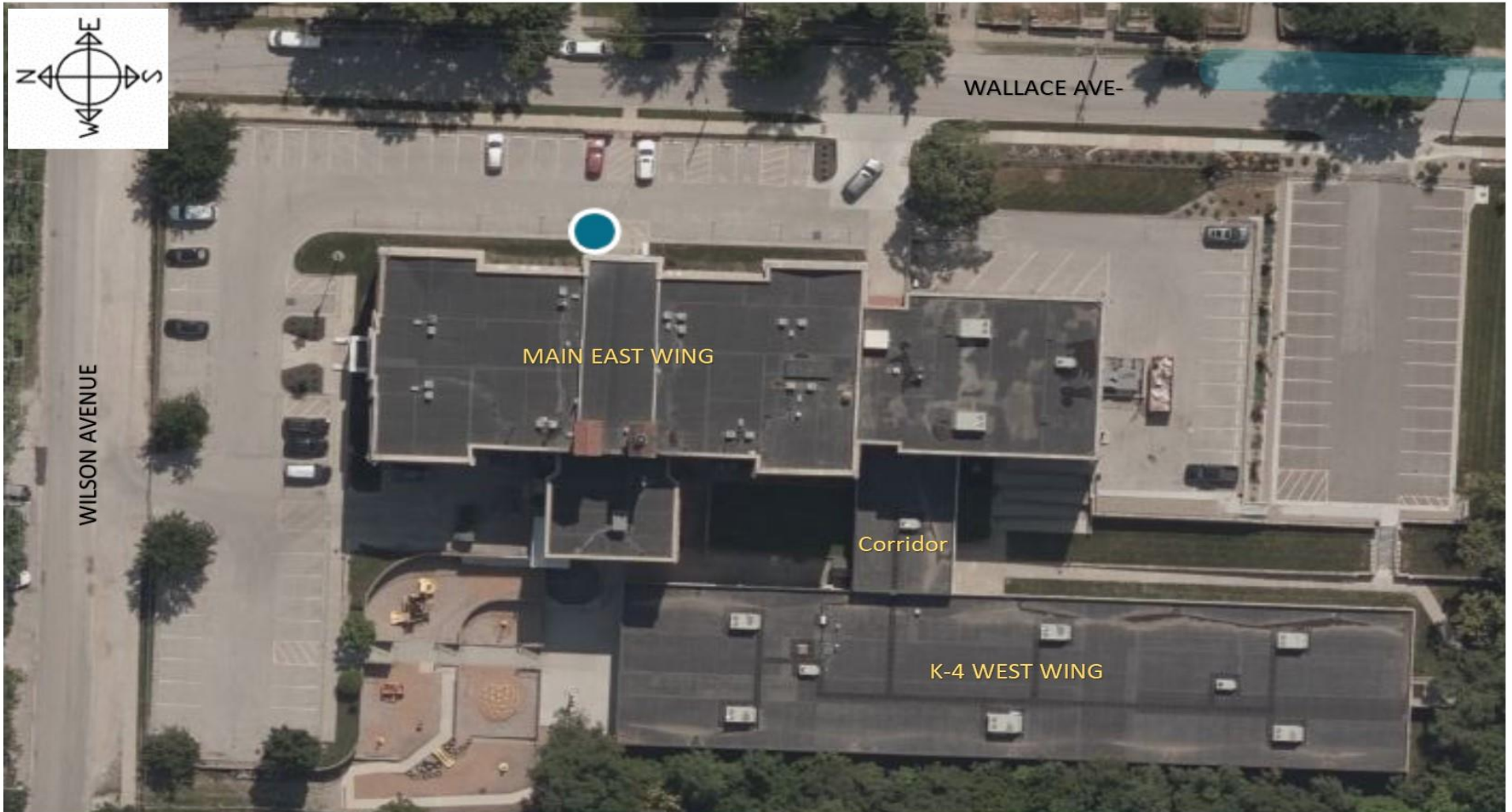
1. Arial view of property
2. Access, MDF and IDF locations
3. Aruba outside Access Points



# KC International Academy

414 Wallace Avenue, Kansas City, MO 64125  
816-242-4206

## 414 Wallace Avenue



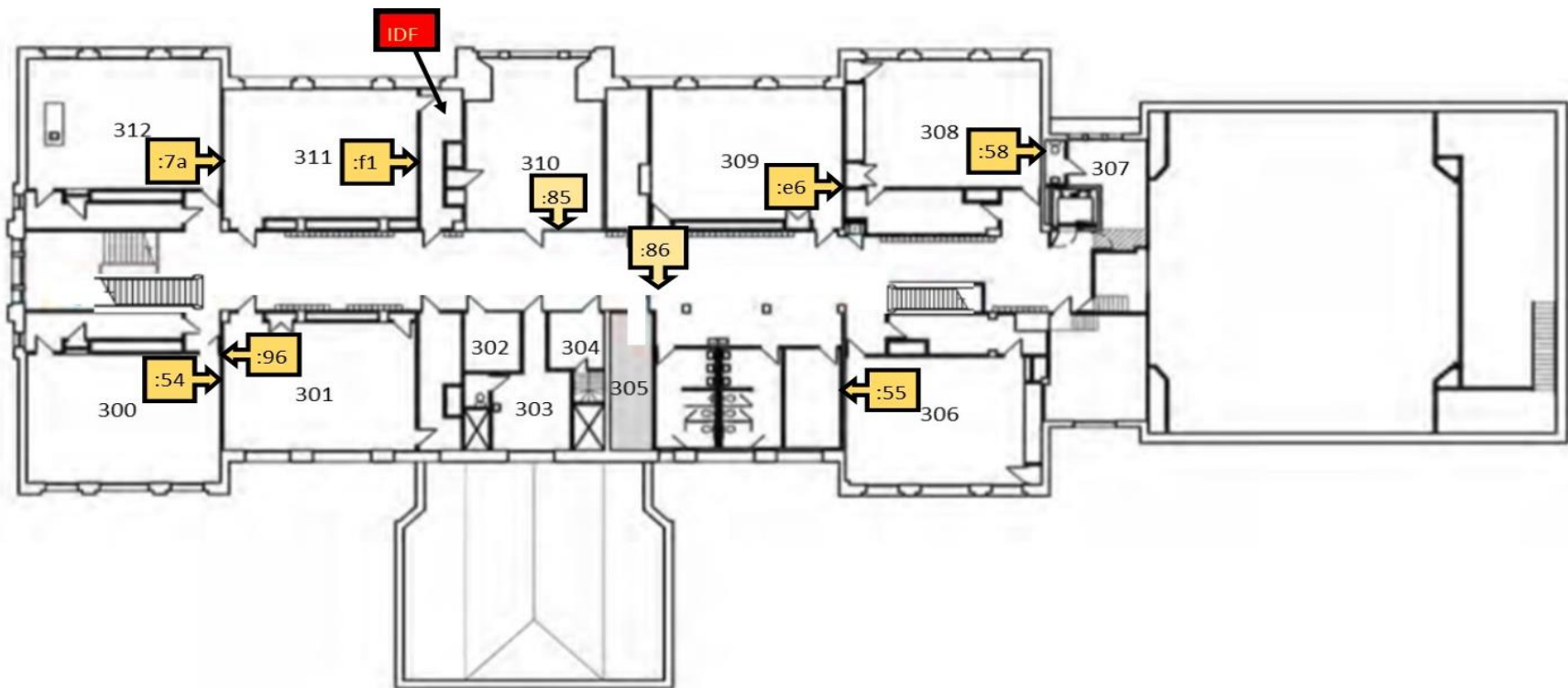


# KC International Academy

414 Wallace Avenue, Kansas City, MO 64125  
816-242-4206



## Kansas City International Academy Third Floor (East Wing)

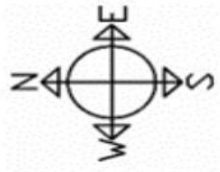






# KC International Academy

414 Wallace Avenue, Kansas City, MO 64125  
816-242-4206



## Kansas City International Academy Second Floor (East Wing)





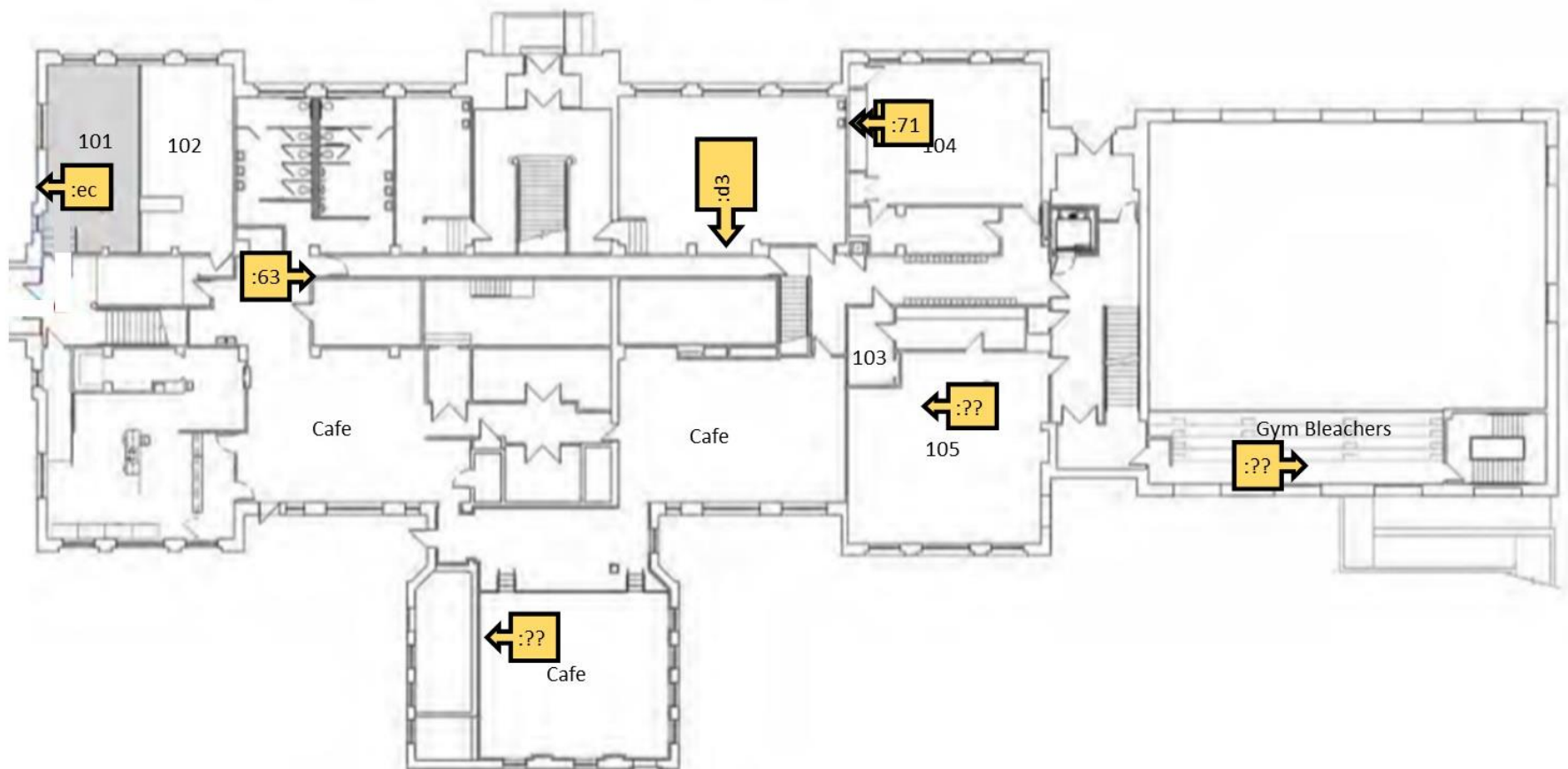
# KC International Academy

414 Wallace Avenue, Kansas City, MO 64125  
816-242-4206



## Kansas City International Academy

### First Floor (East Wing)





# KC International Academy

414 Wallace Avenue, Kansas City, MO 64125  
816-242-4206



## Kansas City International Academy Lower Level (East Wing)









# KC International Academy

414 Wallace Avenue, Kansas City, MO 64125  
816-242-4206

## Closet Connections:

### MDF—Lower Level

- #1 Soccer Field
- #2 South End

### 2nd Floor (Nurses Office is name)

- #3 Northwest corner
- #4 Northeast corner
- #5 East side

### Library

- #6 Above Fire Escape stairs

